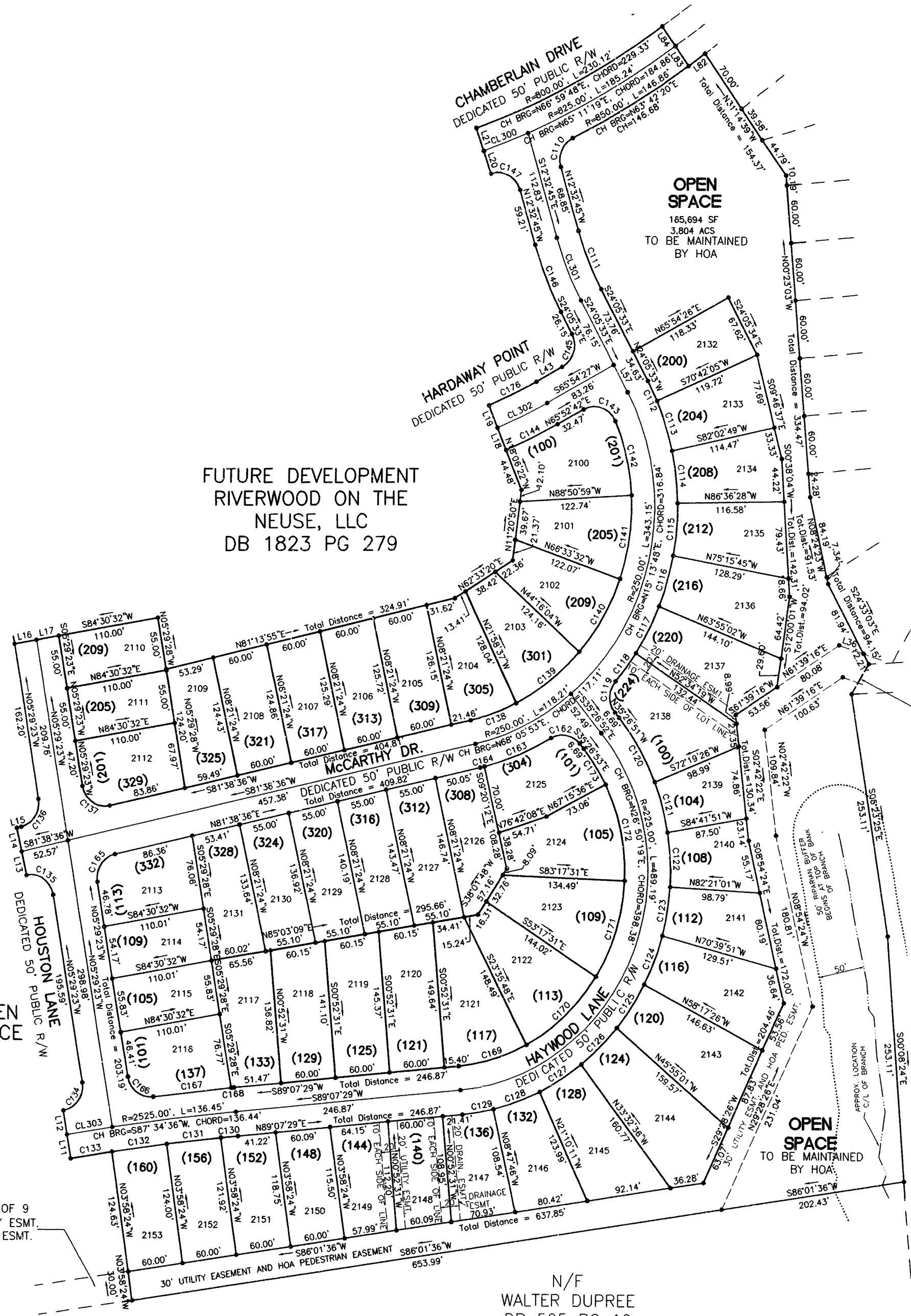


OPEN SPACE

FUTURE DEVELOPMENT
RIVERWOOD ON THE
NEUSE, LLC
DB 1823 PG 279

OPEN SPACE

SEE SHEET 6A OF 9
FOR 30' UTILITY ESMT.
AND HOA PED. ESMT.
CONTINUED



OPEN SPACE
165,694 SF
3.804 ACS
TO BE MAINTAINED
BY HOA

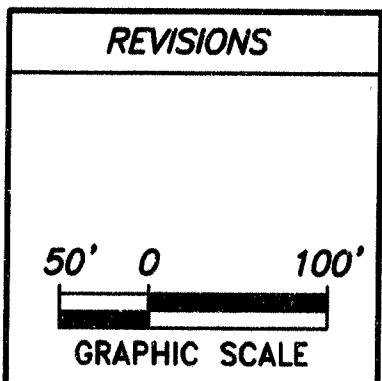
SEE SHEET 5 OF 9
PHASE 2-A

LAND NOW OWNED BY
ERNERST W. ONEIL
742-142

- NOTES:**
- SEE SHEET 8 OF 9 FOR LINE AND CURVE TABLES.
 - SEE SHEET 9 OF 9 FOR CERTIFICATIONS.
 - ALL OPEN SPACE (OS) TO BE MAINTAINED BY HOME OWNERS ASSOCIATION
 - INDIVIDUAL LOT ADDRESSES ARE SHOWN IN PARENTHESES: (100)

N/F
WALTER DUPREE
DB 525 PG 19

STATE OF NORTH CAROLINA, JOHNSTON COUNTY
FILED FOR REGISTRATION AT, 11:35 A.M.
November 15, 2000 IN THE
REGISTER OF DEEDS OFFICE.
RECORDED IN PLAT BOOK 57, PAGE 123.
CECIL M. MASSENGILL
REGISTER OF DEEDS
BY Cherry W. Sutton
DEPUTY REGISTER OF DEEDS



REVISIONS

AREA BY COORDINATE METHOD.
NO HORIZONTAL GROUND CONTROL WAS FOUND WITHIN 2,000 FEET.
THIS PROPERTY IS NOT LOCATED IN A FLOOD ZONE ACCORDING TO FEMA FLOOD MAP PANEL NUMBER 37101C0085D, 37101C0095D & 37101C0080D

**PHASE 2-C
SHEET 6 OF 9**

**RIVERWOOD ATHLETIC CLUB
PHASES 1-A, 2-A,
2-C, 3-B, & 3-C**

TOWNSHIP: WILDERS	COUNTY: JOHNSTON
NORTH CAROLINA	
ZONED:	TAX MAP NO.: NCPIN#:

**PROPERTY OF
RIVERWOOD ON THE NEUSE, LLC
DB 1823 PG 279**

DENNIS RAY BLACKMON, RLS
Land Surveying - Land Development Consultant - Mapping
1023C WEST MARKET STREET - P. O. BOX 1401
SMITHFIELD, NC 27577 PHONE: 934-3490

DATE: 9/13/2000	SURVEYED BY:	FILE NAME:
SCALE: 1"=100'	DRAWN BY: DCA	A-PHASE1A2A2C3R3CB1-B7CD
CHECKED & CLOSURE BY: DRB	DRAWING NO.: 00-70	